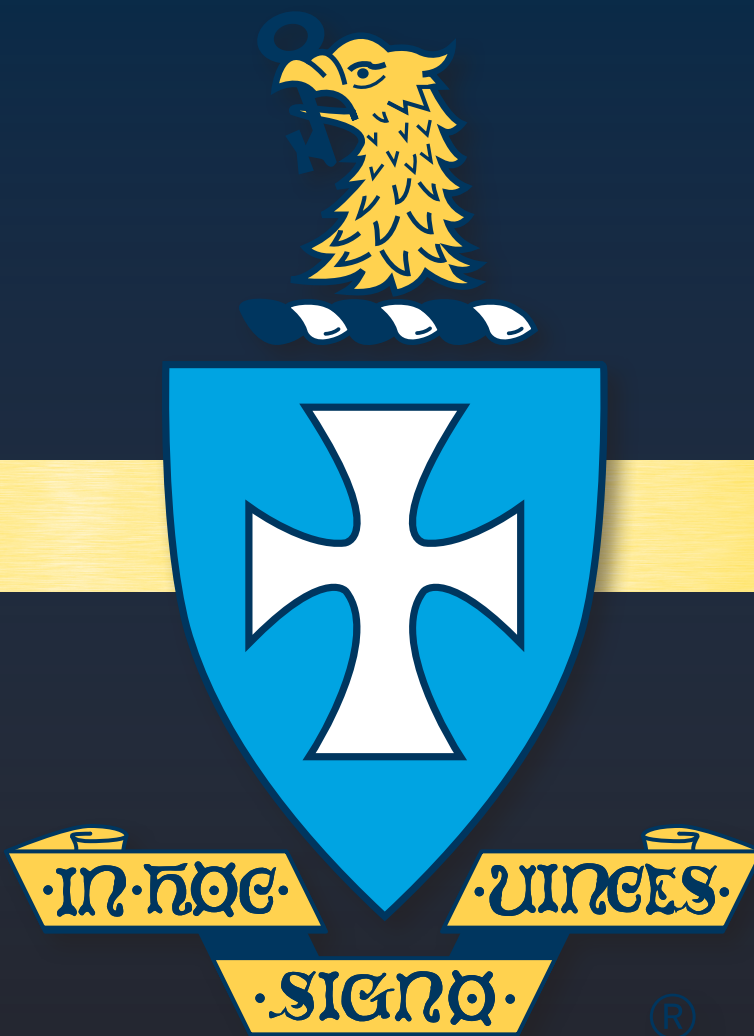
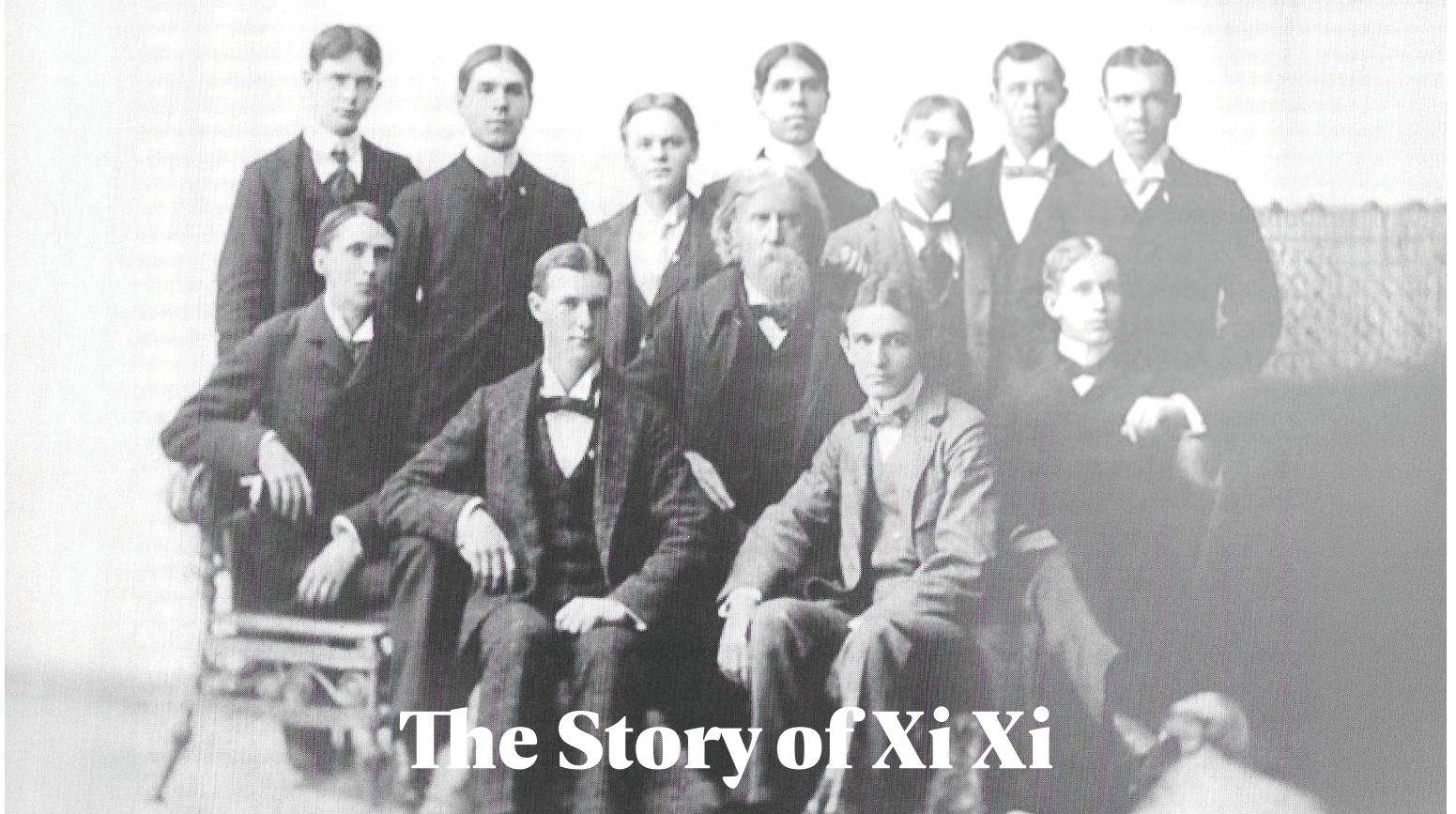


Reigniting Our Tradition of Leadership



**SIGMA CHI AT THE
UNIVERSITY OF MISSOURI**

Established 1896



The Story of Xi Xi

Xi Xi Chapter of Sigma Chi holds a storied legacy at the University of Missouri, one that is deeply intertwined with the institution's history and tradition. Over the years, countless individuals have passed through the doors of Xi Xi Chapter and gone on to achieve remarkable success in their respective fields. Whether it be as leaders in their professions, dedicated public servants, or influential figures within their communities, Sigma Chi alumni from Mizzou have left an indelible mark on the community and world around them.

Throughout its existence, Xi Xi Chapter has weathered numerous challenges with resilience and pride. Our goal for our newly installed Chapter is to emerge as a steadfast leader among Greek



organizations at Mizzou by highlighting Xi Xi's enduring commitment to excellence and service to solidify our reputation as a pillar of the university community.



Central to the Chapter's identity is its iconic Chapter House located at 500 S. College Avenue. This historic building not only serves as a gathering place for Brothers but also stands as a symbol of alumni attachment and a beacon on campus. With its timeless architecture and prime location, the Chapter House is widely regarded as a jewel in the campus landscape.

As Xi Xi Chapter of Sigma Chi continues to thrive and evolve, it remains deeply rooted in its rich history and tradition. With each new generation of Brothers, the legacy of leadership, excellence, brotherhood, and service is passed down inside the halls on College Avenue.

To continue this tradition, we need your help to restore our classic Chapter House to ensure that this experience is provided now and for many years to come. We need your help to build a community that our Brothers—both current and those to come—need. We need your help to maintain the Sigma Chi tradition and get back to leading all men in Columbia—the Sigma Chi way.



Xi Xi Today: Leaders on Campus, in the Community, and in the Classroom



We're quickly
growing and
recruiting men
with Sigma Chi
values

60

MEMBERS

35

Members on the
fall 2024 dean's list

68% of our
membership! ↙

3.38

Chapter GPA

- Sixth among IFC fraternities in 2024
- Second highest among "small fraternities"
- .12 above IFC average



Members with
4.0 GPAs in
fall 2024

5

Xi Xi Through Their Eyes...



KYLE MILBURN '26, KANSAS CITY, MO.

CONSUL

“Sigma Chi at Mizzou is experiencing a historic resurgence, and your support will directly shape the future of our brotherhood. After being reinstated, we didn’t just settle—we pushed past the mark time and time again. In just a few short years, we’ve grown from five men to over sixty, proving that our commitment to excellence and leadership is stronger than ever. Even as a newly reinstated chapter, we had the privilege of installing Westminster’s Delta Tau Chapter—an experience that was especially meaningful to me as my first installation as Consul. This speaks volumes about the momentum we’ve built and the bright future ahead. The work we put in today lays the foundation for the future of Sigma Chi at Mizzou. We are not just rebuilding; we are setting a new standard. A refreshed house and expanded scholarship opportunities will allow us to continue attracting and developing the best men—leaders who will carry the values of Sigma Chi beyond their college years. Your generosity isn’t just a donation; it’s an investment in the future of our chapter, ensuring that the legacy of Sigma Chi at Mizzou not only endures but also thrives. We are the future, and with your support, we will continue to push forward, leaving a lasting impact for generations to come.”

HARMON COLVETT '25, MEMPHIS, TENN.

SOCIAL CHAIRMAN, FORMER CONSUL

“My favorite memory was our installation banquet. As one of the original five members, I have seen all of the highs and lows on the road to becoming a true Sigma Chi Chapter. The installation banquet was the culmination of 936 days of work between being pinned as a pledge and as an active Sigma Chi (but who’s counting). I was able to sit with Brothers, alumni, staff, and loved ones who all believe in the meaning of the white cross and are dedicated to its success.”



HARRISON LINGLE '27, ST. LOUIS, MO.

SCHOLARSHIP CHAIRMAN

“Being a member of Sigma Chi means upholding the values of the fraternity. Embracing the bonds of friendship, holding each other accountable, and learning from each other are aspects unique to this brotherhood I share with no one else. Sigma Chi provides a template to find fulfillment in life, and while it is the Brother’s responsibility to follow it, he has ample resources around him to aid in his journey for the white cross.”



Setting Xi Xi Apart

To remain competitive on campus, we are seeking alumni to help contribute to rebuilding our beloved Chapter to ensure the next generation of Xi Xi Brothers are set up for success.



PEOPLE

To preserve the opportunities we enjoyed for future generations of Xi Xi men, we need your help to grow our scholarship fund, allowing us to recruit outstanding members regardless of financial background and recognize active brothers for their contributions to the Chapter. Without great **People**, our brotherhood would cease to exist. The bonds we have made would not be there and our lives would never be impacted by the memories we shared together. This **scholarship fund** will allow us to find the right men—leaders on campus—to guide our Chapter back to success while creating the bonds that make us Sigma Chis.



PURPOSE

It is our **Purpose** as alumni to foster the next generation of leaders the right way. While we have done this before, we have learned from our mistakes and intend to make Sigma Chi's purpose a center point of the our new Chapter moving forward. With your help investing into today's chapter, we can help the on-campus chapter move into the house in August 2025 in the best position to win in both the short and long terms. We will pay down the remaining Chapter debt to reduce our annual expenses and build a reserve fund that provides for a stable financial position and to help our Chapter and alumni to meet unforeseen costs that may arise.



PLACE

500 S. College Avenue is a crown jewel at Mizzou that needs polishing before we move back in fall 2025. Part of this polish will include updating the house after five years of our absence. We are also moving to a model that will reduce the number of men living in this **Place** to keep the Chapter tightknit and manageable. With fewer undergraduate members, alumni will be able to offer more support, as the ratio of alumni members to undergraduate Brothers increases for direct mentoring and oversight.



POWER

By harnessing the **Power** of collective friendship, justice, and learning, we can lay the groundwork for a future filled with camaraderie, integrity, and growth. Together, let us seize this moment to invest in something greater than ourselves and ensure that our fraternity thrives for years to come.

Our Challenges and Needs

Xi Xi has withstood the test of time. From Depressions to World Wars to a Global Pandemic, we have learned from over 100 years and our previous rechartering that we are a Chapter made up of strong **People**. This knowledge will guide us on this quest to bring our Brothers home to 500 S. College Avenue into our classic and storied Chapter House. We need to revitalize the bones of the house to be more reliable, efficient, and to require fewer repairs. We intend to build a renewed place where young men grow into Transformational leaders while creating the memories that build bonds of brotherhood.

As we stand on the cusp of moving our Chapter back into our house, there has never been a more opportune moment to rally support and raise the necessary funds to ensure our return is not only successful but also transformative, built to last for the decades ahead. By revitalizing our fraternity, we have the chance to cultivate new friendships and strengthen existing ones, redefining the **Purpose** of our Sigma Chi brotherhood. We know we have done this process before, but dedicated alums have been at work to begin anew again

—in ways to last permanently. We have learned from our history, and we are ready to take our place as leaders at Mizzou once more.

Other fraternities and houses have undergone these types of renovations, and now is our time to level the playing field. With replacement systems, refreshed community spaces and updated furniture, we can meet the growing demand for a Residential Learning Community. Further, new private apartment complexes have been built in and near campus that feature updated amenities with private bedrooms and bathrooms. These complexes aggressively recruit students over a year out with incentives that Greek housing cannot offer. So it's more challenging for fraternities to fill spaces in their houses. Our **Place** at 500 S. College Avenue puts us above the rest, but we need your help to maintain that.

Fraternity homes are places where Brothers laugh, learn, and love each other. Xi Xi cultivates that **Power** of brotherhood for the young men of Xi Xi. They are attracted to the Sigma Chi standards of Friendship, Justice, and Learning. But we must provide the highest housing standards once again—as we always have.



What's Different This Time?

A NEW DAY FOR XI XI

Xi Xi is experiencing a true fresh start, backed by a strong foundation of committed Brothers, engaged alumni, and support from the University, Sigma Chi International, and regional officers. Unlike previous resets, this effort is built on lessons learned, ensuring a sustainable future by maintaining focus on our values and standards.

STRONGER UNIVERSITY RELATIONS

Mizzou's administration has evolved into a strong supporter of the Greek system. Key leaders, including President Mun Choi and Director of Fraternity and Sorority Life Christopher Jefferson (Mizzou Alum), actively advocate for fraternities and have demonstrated direct support for Xi Xi's reinstatement. This new collaboration provides a fresh opportunity to build a positive, lasting relationship with the University.

MIZZOU GREEK ALLIANCE: A UNIFIED SUPPORT SYSTEM

The Mizzou Greek Alliance, an organized and well-funded fraternity alumni network, has been instrumental in strengthening fraternity relations and operations. Xi Xi has actively contributed to this initiative, which is the most influential Greek advocacy group Mizzou has seen in 50 years.

UNPARALLELED SIGMA CHI INTERNATIONAL SUPPORT

Sigma Chi International has been a dedicated partner in Xi Xi's revival, providing expert guidance, recruitment assistance, and

leadership training. With access to the best leadership development programs in the Greek system, our youngest members are well-equipped to ensure the long-term success of our Chapter.

A NEW XI XI ALUMNI ORGANIZATION

Xi Xi alumni involvement has evolved beyond a small, house-focused group. Now, the **House Corporation (HC)** handles property management, financing, and legal matters, ensuring a safe and well-maintained home. Meanwhile, the **Alumni Advisory Board (AAB)** directly supports the Chapter, mentoring officers and addressing issues proactively. This structured, hands-on approach ensures sustained success rather than reactive crisis management.

A PROFESSIONAL HOUSE DIRECTOR

Instead of a traditional housemom, Xi Xi now has a **professional property manager** responsible for maintenance, safety, and wellness. Our selected candidate has already proven himself while working with our tenants, providing valuable continuity and expertise.

A NEW CHAPTER VISION

Xi Xi is committed to **values-based recruiting**, prioritizing leadership, academics, and brotherhood over sheer numbers. By limiting house occupancy to 50-60 members and expanding our reach beyond past recruitment pools, we're fostering a purpose-driven fraternity experience.



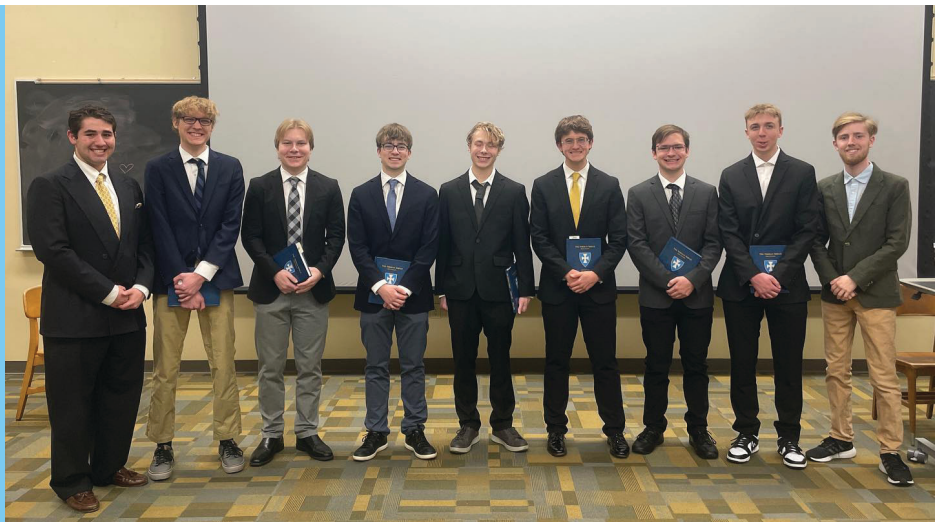
Reigniting Our Tradition of Leadership

Help us make this vision a reality by making your donation today. Just as the men who came before us gave of themselves to ensure Xi Xi's legacy, we must now do the same for the next generation of Sigma Chi men.



Because of the magnitude of this project, we are encouraging all alumni to consider major gifts to the campaign. Gifts may be fulfilled over a five-year period to maximize your commitment.

We know tax deductibility is important to some donors, and we are working with our local foundation to make this happen. The IRS will allow tax-deductible dollars to be spent on scholarships and spaces in the Chapter House used exclusively for educational purposes.



GIVING SOCIETY	FIVE-YEAR PLEDGE	MONTHLY	SEMIANNUALLY	ANNUALLY
Jordan Standard Council	\$250,000	\$4,167	\$25,000	\$50,000
Norman Shield Council	\$100,000	\$1,667	\$10,000	\$20,000
1896 Council	\$50,000	\$833	\$5,000	\$10,000
500 College Council	\$25,000	\$417	\$2,500	\$5,000
Constantine Council	\$10,000	\$167	\$1,000	\$2,000
Seven Lights Council	\$5,000	\$83	\$500	\$1,000
Xi Xi Council	\$2,500	\$42	\$250	\$500
Order of the White Cross	\$1,000	\$17	\$100	\$200